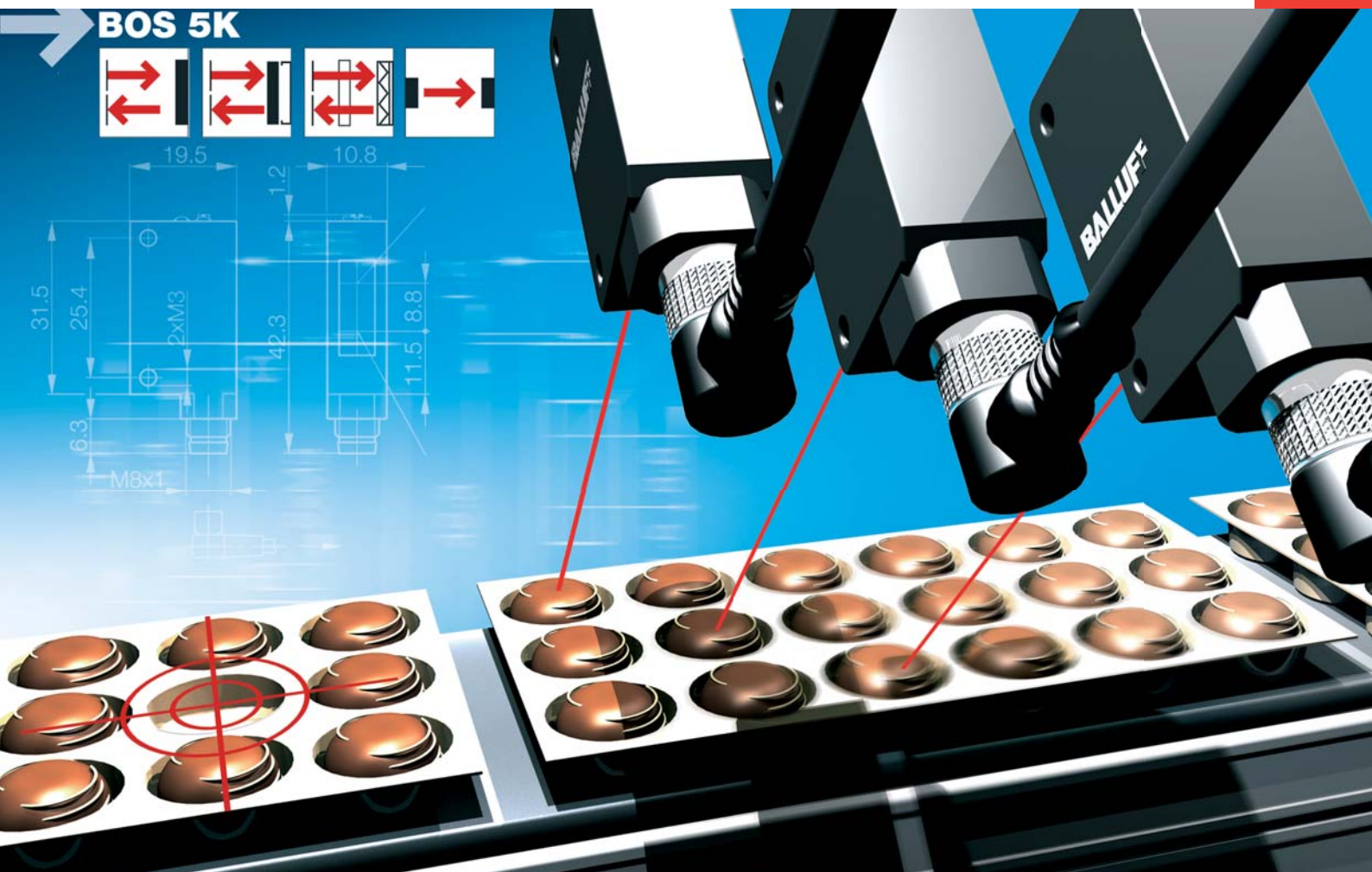


BALLUFF

sensors worldwide

Series BOS 5K

... Now with Background Suppression



Photoelectric Sensors BOS 5K – just the essentials

Series BOS 5K includes diffuse, retro-reflective and through-beam sensors. New is a diffuse model with background suppression and 200 mm range.

All models can be ordered with cable or connector, PNP or NPN output and light-on or dark-on switching.

The benefits to you:

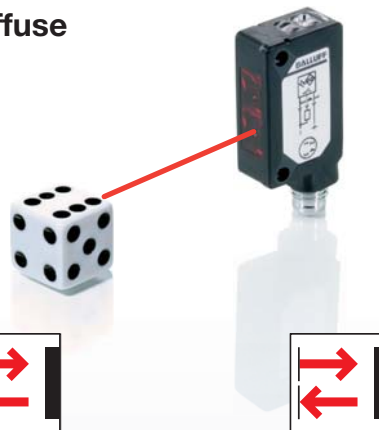
- Small, compact housing
- Complete series for virtually any application
- For universal use
- Simple to calibrate
- Reliable in the application
- Very good price/performance ratio
- Large offering of mounting brackets, apertures and reflectors



Diffuse with Background Suppression

Monitoring the assembly process in consumer goods production – targeted interrogation of individual product attributes.

Diffuse



with background suppression
scan range 40...200 mm

- Simple to calibrate using 6-turn potentiometer
- Visible red light for easy alignment
- Reliable object detection in front of a background



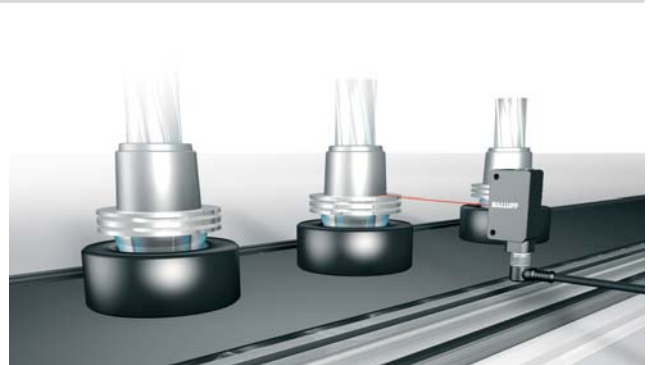
"small beam" with red light (energetic)
scan range 50...200 mm

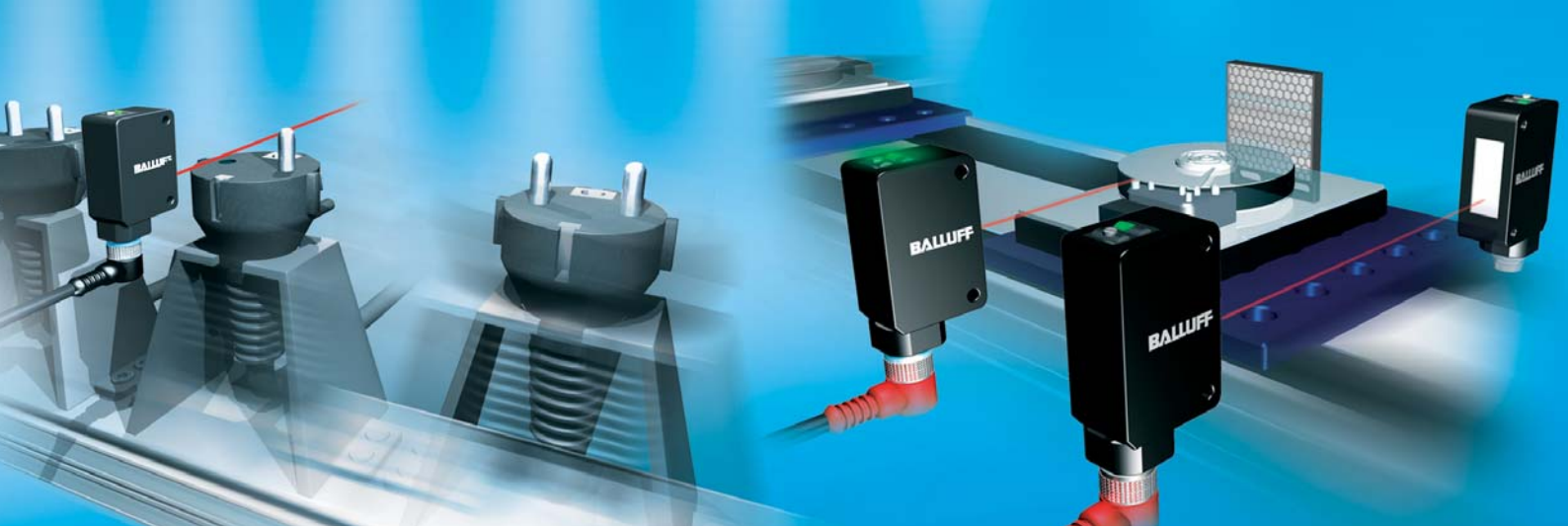
- Pinpoint LED enables detection of small objects
- Simple to align and calibrate
- Cost-effective solution for demanding applications



with infrared light (energetic)
scan range 900 mm

- High light intensity enables ranges up to 900 mm
- Simple calibration via potentiometer
- Very good price/performance ratio





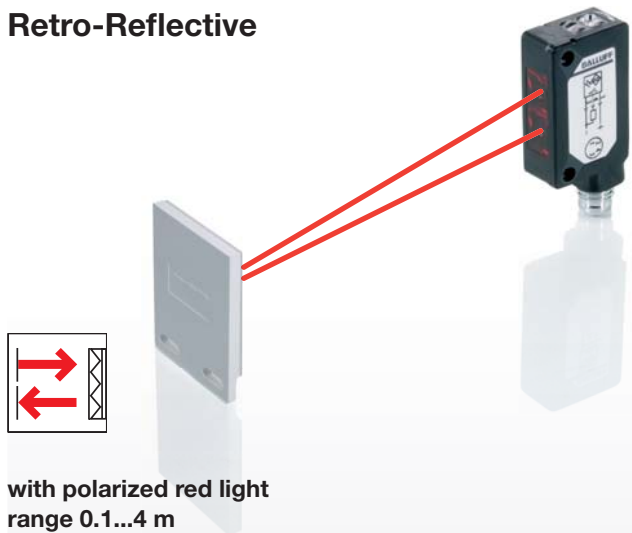
Diffuse "small beam" with Red Light (energetic)

The precise light beam reliably detects the presence of small parts.

Retro-Reflective and Through-Beam

Assembly technology – powerful sensors for long ranges and a high degree of function reserve.

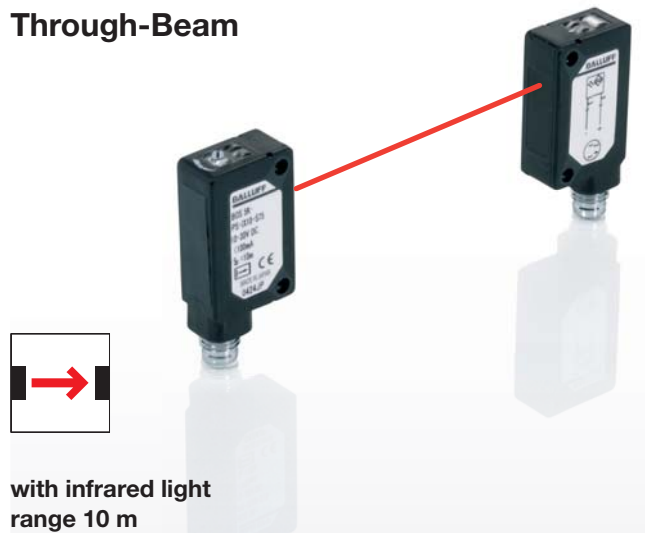
Retro-Reflective



with polarized red light
range 0.1...4 m

- Polarized red light enables reliable detection even of reflective objects
- Long range up to 4 m
- Simple to align and calibrate

Through-Beam



with infrared light
range 10 m

- Long range up to 10 m
- Simple to align emitter and receiver
- Slit apertures enable excellent small parts detection
- Simple calibration via potentiometer



Photoelectric Sensors

BOS 5K – Selection Table

	P/N with connector	P/N with cable	Output	P/N with connector	P/N with cable	Output
NEW!	Diffuse with background suppression, red light, scan range 40...200 mm			Retro-reflective, polarized red light, scan range 0.1...4 m		
	BOS 5K-PS-RH12-S75	BOS 5K-PS-RH12-02	PNP	BOS 5K-PS-RR10-S75	BOS 5K-PS-RR10-02	PNP
	BOS 5K-NS-RH12-S75	BOS 5K-NS-RH12-02	NPN	BOS 5K-NS-RR10-S75	BOS 5K-NS-RR10-02	NPN
	BOS 5K-PO-RH12-S75	BOS 5K-PO-RH12-02	PNP	BOS 5K-PO-RR10-S75	BOS 5K-PO-RR10-02	PNP
	BOS 5K-NO-RH12-S75	BOS 5K-NO-RH12-02	NPN	BOS 5K-NO-RR10-S75	BOS 5K-NO-RR10-02	NPN
	BOS 5K-PO-RH12-S75-S		PNP	BOS 5K-PO-RR10-S75-S		PNP
	BOS 5K-NO-RH12-S75-S		NPN	BOS 5K-NO-RR10-S75-S		NPN
	Diffuse "small beam" with red light (energetic), scan range 50...200 mm			Through-beam, infrared light, range 10 m (both emitter and receiver included)		
	BOS 5K-PS-RD11-S75	BOS 5K-PS-RD11-02	PNP	BOS 5K-PS-IX10-S75	BOS 5K-PS-IX10-02	PNP
	BOS 5K-NS-RD11-S75	BOS 5K-NS-RD11-02	NPN	BOS 5K-NS-IX10-S75	BOS 5K-NS-IX10-02	NPN
	BOS 5K-PO-RD11-S75	BOS 5K-PO-RD11-02	PNP	BOS 5K-PO-IX10-S75	BOS 5K-PO-IX10-02	PNP
	BOS 5K-NO-RD11-S75	BOS 5K-NO-RD11-02	NPN	BOS 5K-NO-IX10-S75	BOS 5K-NO-IX10-02	NPN
	BOS 5K-PO-RD11-S75-S		PNP	BOS 5K-PO-IX10-S75-S		PNP
	BOS 5K-NO-RD11-S75-S		NPN	BOS 5K-NO-IX10-S75-S		NPN
	Diffuse, infrared light (energetic), scan range 900 mm					
	BOS 5K-PS-ID10-S75	BOS 5K-PS-ID10-02	PNP			
	BOS 5K-NS-ID10-S75	BOS 5K-NS-ID10-02	NPN			
	BOS 5K-PO-ID10-S75	BOS 5K-PO-ID10-02	PNP			
	BOS 5K-NO-ID10-S75	BOS 5K-NO-ID10-02	NPN			
	BOS 5K-PO-ID10-S75-S		PNP			
	BOS 5K-NO-ID10-S75-S		NPN			

Accessories

Brackets

BOS 5-HW1
BOS 5-HW2
BOS 5-HW3
(from left to right)



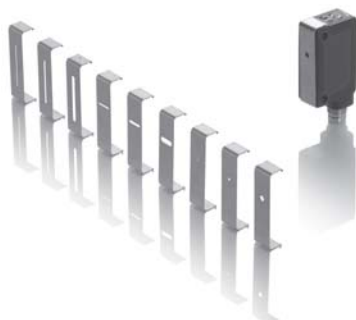
Reflectors, reflector brackets

BOS R-1
BOS R-25
BOS 5-HW4
BOS R-26
BOS 5-HW5
BOS R-9
BOS 5-HW6
BOS R-27
BOS R-28
BOS R-29
BOS R-30
(from left to right)



Vertical slit apertures

BOS 5-BL1
BOS 5-BL2
BOS 5-BL3



Horizontal slit apertures

BOS 5-BL4
BOS 5-BL5
BOS 5-BL6

Circular apertures

BOS 5-BL7
BOS 5-BL8
BOS 5-BL9
(from left to right)

Connectors

BKS-S 74
BKS-S 75
(from left to right)



Balluff GmbH
Schurwaldstrasse 9
73765 Neuhausen a.d.F.
Germany
Phone +49 7158 173-0
Fax +49 7158 5010
balluff@balluff.com
www.balluff.com